




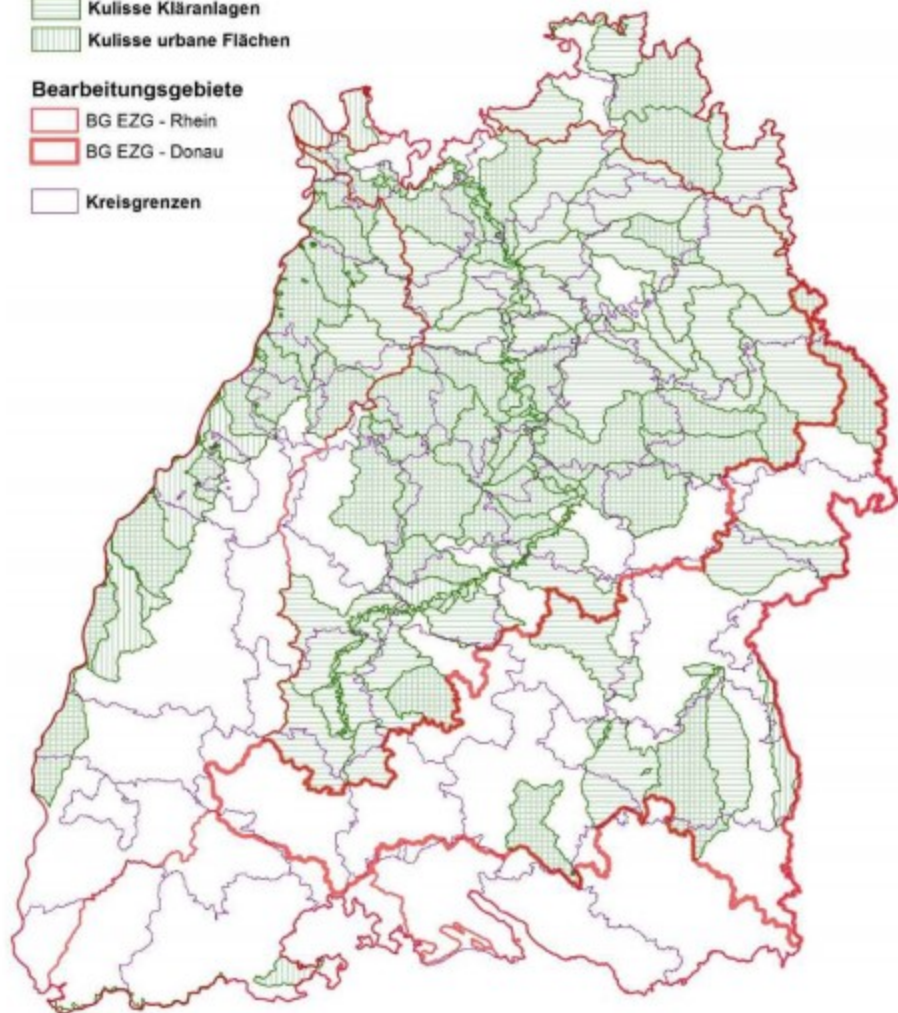


### Wasserkörper

-  Kulisse Kläranlagen
-  Kulisse urbane Flächen

### Bearbeitungsgebiete

-  BG EZG - Rhein
-  BG EZG - Donau
-  Kreisgrenzen



Grundlage: © LGL BW, RIPS



UfW

Abbildung 4-2: Landesweite Maßnahmenkulissen im Bereich der Abwasserbehandlung – P-Kulisse „Kläranlagen“ und „Urbane Flächen“