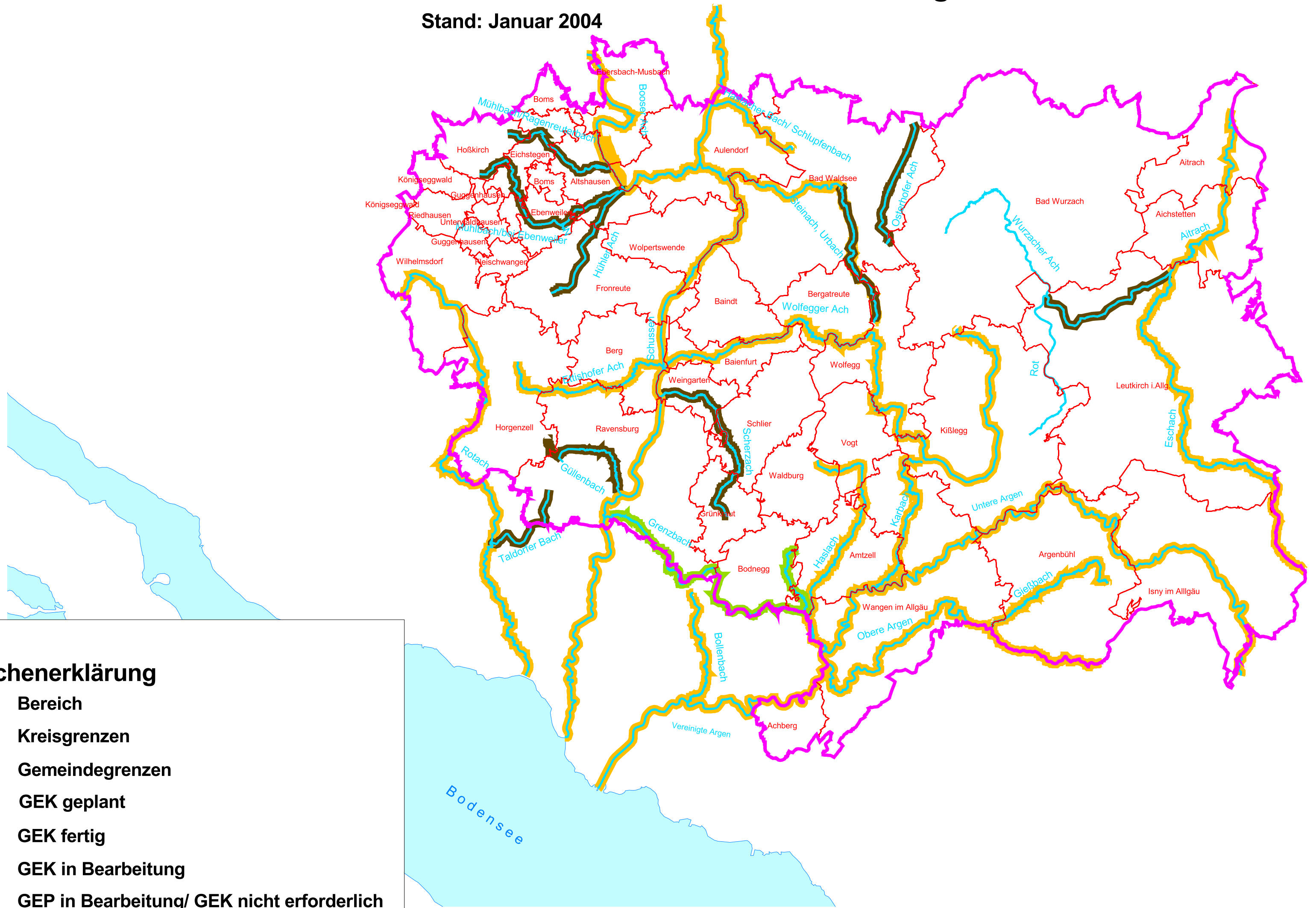


Gewässerentwicklungskonzepte für Gewässer mit Einzugsgebiet > 20 km²







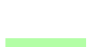

Kreis Ravensburg

Gewässerdirektion Donau/ Bodensee Bereich Ravensburg

Stand: Januar 2004



Zeichenerklärung

-  Bereich
-  Kreisgrenzen
-  Gemeindegrenzen
-  GEK geplant
-  GEK fertig
-  GEK in Bearbeitung
-  GEP in Bearbeitung/ GEK nicht erforderlich
-  GEP vorhanden / GEK nicht erforderlich