

# Upper Rhine



The Cooperation Area Upper Rhine operates according to the principle of governance among those in charge of politics, business, science and civil society.

The Trinational Metropolitan Region Upper Rhine (TMR) was established with the goal of uniting previously independent political, economic, scientific and civil society actors, in order to develop an effective cross-border strategy by 2030. This strategy is used as the basis of the Operational Program INTERREG V Upper Rhine, which enables the financing of the planned lighthouses projects. This type of multi-level governance and dynamic execution of plans does not create a new structure, but rather tends to bring the existing resources and actors together to create new synergies. We want to turn pioneering projects into reality.

The TMR is a good example of a development approach that is applied across the different levels of government and sectoral boundaries. It also takes into account different spatial delineations. This combination of multi-level governance and variable geometry is an expression of coherent and sustainable cooperation.

Overall, the Trinational Upper Rhine region meets all the criteria of a polycentric metropolitan region:

- **Central Political and Economic Function:** In the Upper Rhine Valley there is a high concentration of national and international entities. (i.e European parliament, European Court for Human Rights, as well as the German Federal Constitutional Court, German Federal Court, ARTE, Bank for International Settlements etc.) along with numerous economic actors (GDP 272 Billion €/year). Lastly many companies that exist on an international level are present in the region (Novartis, Roche, Mercedes, Bosch, Peugeot, Siemens, Schaeffler, Herrenknecht etc.).
- **Innovation and Competition:** The Upper Rhine region is prominent for its social, cultural and technical development, with an exceptionally high number of Universities (European Campus), institutions for higher education, study and career options and lastly home to several Nobel Prize winners.
- **Gateway-Function:** The Upper Rhine Valley is a transport hub. It includes international airports, the Rhine river serving as

Europe's most important inland waterway, high velocity trains ICE/TGV, several highways, efficient cross-border transport, ten new bridges across the river Rhine built within the last 15 years, home internet servers (gmx, 1&1, web.de are all based in Karlsruhe) and expositions.

- Symbolism: Through its historic, political, cultural and architectural prominence the Upper Rhine Valley is internationally recognized in relation to World Heritage Sites. Throughout history the area has been associated to humanists such as Erasmus von Rotterdam or printing pioneers as Gutenberg. Today, there is an extensive network of ten large cities, libraries, concert halls, museums, cathedrals etc.
- In addition, in order to achieve the goals and successfully implement the strategy 2020 the region will use the TMO governance model, through political, economic and scientific expertise.

## Structures of cooperation

- Trinationale Metropolregion Oberrhein
- D-F-CH Regierungskommission
- D-F-CH Oberrheinkonferenz
- Oberrheinrat
- Städtenetz Oberrhein
- Eurodistrict PAMINA
- Eurodistrikt Strasbourg/Ortenau
- Eurodistrict Region Freiburg/Centre et Sud Alsace
- Trinationaler Eurodistrict Basel

The Eurodistricts encourage citizens to meet each other by facilitating small projects with INTERREG funds.

- INFOBEST PAMINA
- INFOBEST Kehl/Strasbourg
- INFOBEST Vogelgrun/Breisach
- INFOBEST PALMRAIN
- Euro-Institut
- European Consumer Protection (Zentrale für Europäischen Verbraucherschutz e. V.)
- TRION-climate e.V.
- Service for cross border job-placement (Service für grenzüberschreitende Arbeitsvermittlung)
- Joint center of german-french police and customs cooperation (Gemeinsames Zentrum der deutsch-französischen Polizei- und Zollzusammenarbeit)
- German-french water police on the rhine (Deutsch-französische Wasserschutzpolizei auf dem Rhein)
- Mobile training facility for firefighters on the Rhine (Mobile Übungsanlage Binnengewässer (MÜB))
- TriRhenaTech - engineer forming colleges (Ingenieur bildende Hochschulen)
- EUCOR - The European Campus
- Verwaltungsbehörde INTERREG Oberrhein

## Partners of the cross-border cooperation

- Overview of the partners

## INTERREG-Projekte Upper Rhine



TriRheniaTech:

Structuring the cross-border cooperation between universities of applied sciences on the Upper Rhine

More information



Vitifutur:

Development of new processes for sustainable viticultural production

More information



EUCOR:

The European Campus: Cross-border structures

More information



Pressestelle RPF

Tram Strasbourg-Kehl: Construction of the eastern extension of the tram line D from Strasbourg to Kehl

More information



Copyright: ©Photothèque ICube / A. Morlot

SPIRITS:

Development of a robotic system and several innovations in the field tactile transducers and more

More information



<https://alsace.lpo.fr/index.php/ramsar-rhinature>

RAMS'ARTENSCHUTZ:

Development of cross-border monitoring strategies and protection programs for threatened species in the Upper Rhine area, especially in the Ramsar area

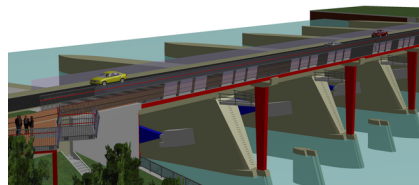
More information



Agro Form

AGRO Form: Reduce the use of pesticides and develop fertilising practices with less impact on soil, air and water quality

More information



RS Ingenieure Achern

PK309: Pedestrian and cycling bridge over the Rhine between the municipality of Gamsheim and the city of Rheinau

More information



Deutsch-Französisches Historial Hartmannswillerkopf

Historial auf dem Hartmannswillerkopf: German-French World War I Memorial on the Hartmannswillerkopf

More information



Hugues Architects Mulhouse

ArtRhena: Cross-border cultural centre on the Rhine island between Breisach and



Regierungspräsidium Freiburg

Museums-Pass-Musées: Entry pass for around 320 museums, castles and gardens in Germany, France and Switzerland



Alexandre Schauer

Mobile training facility for hazard prevention on inland waterways (MÜB);

More information

Neuf-Brisach

[More information](#)

[More information](#)